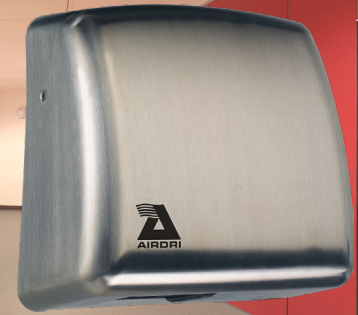



AIRDRI EDUCATION HAND DRYER



 **DRY TIME:**
20 SECONDS

 **ENERGY USAGE:**
1.6 kW

 **SOUND OUTPUT:**
65dBA

 **WARRANTY:**
7 YEARS

The Airdri Education's reliability, sleek design and ultra-low noise output make it a perfect choice for the modern school washroom. Boasting a leading warranty and a vandal resistant cover, the Airdri Education will continue to work well years after installation.

SUITED INDUSTRIES

Schools • Libraries • Learning Centres • Small Offices

ANNUAL RUNNING COST

Uses per day	Annual cost per dryer	Annual cost for paper towels	Annual waste sent to landfill
100	£65	£730	160kg
200	£130	£1,460	320kg
300	£195	£2,190	480kg

**THIS DRYER MEETS THE DEPARTMENT FOR EDUCATION
HAND DRYER SPECIFICATION**

Dimensions	274mm wide x 277mm high x 135mm deep
Weight	3.2kg
Electrical supply	220/240 volts 50/60 Hz
Current consumption	6.7 amps @ 230 volts
Nominal output	1.6 kW
Drying speed	Classic dry
Control system	Automatic, infra red, no-touch
Sensor range	100mm vertically under outlet
Air volume	190 m ³ /h
Air velocity	16 m/s @ 100mm
Air outlet temperature	45°C @ 20°C ambient
Noise level	65 dBA
Cover options	High impact ABS/stainless steel
Colour options	White ABS, brushed stainless steel